

# PLATFORM

Platform of bioeconomy ERA-NET Actions

## THE ERA-NET EXPERIENCE: Slovenia

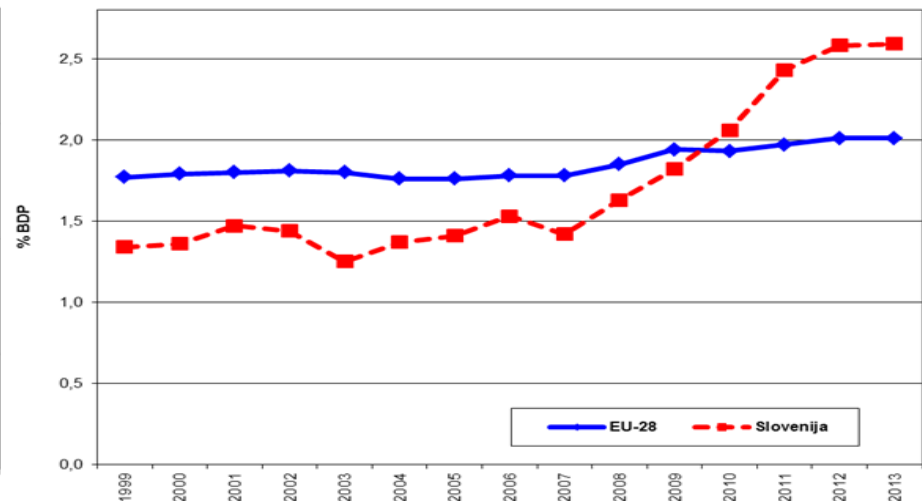
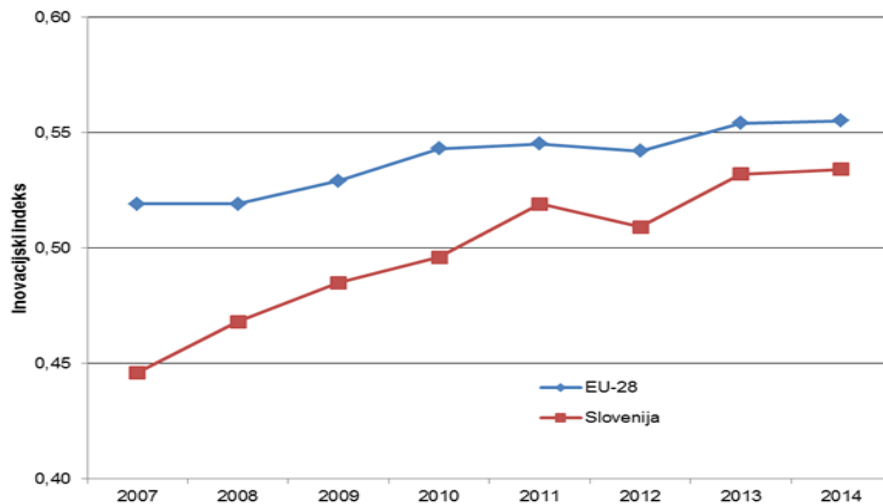


**Kim TURK**

Ministry of Education, Science and Sport, Slovenia

# Research Landscape

- 4 Universities
- 15 National Research Institutes
- 12.111 researchers (5.619 in private sector)
- 1.015 research organizations (including R&D units in business companies)



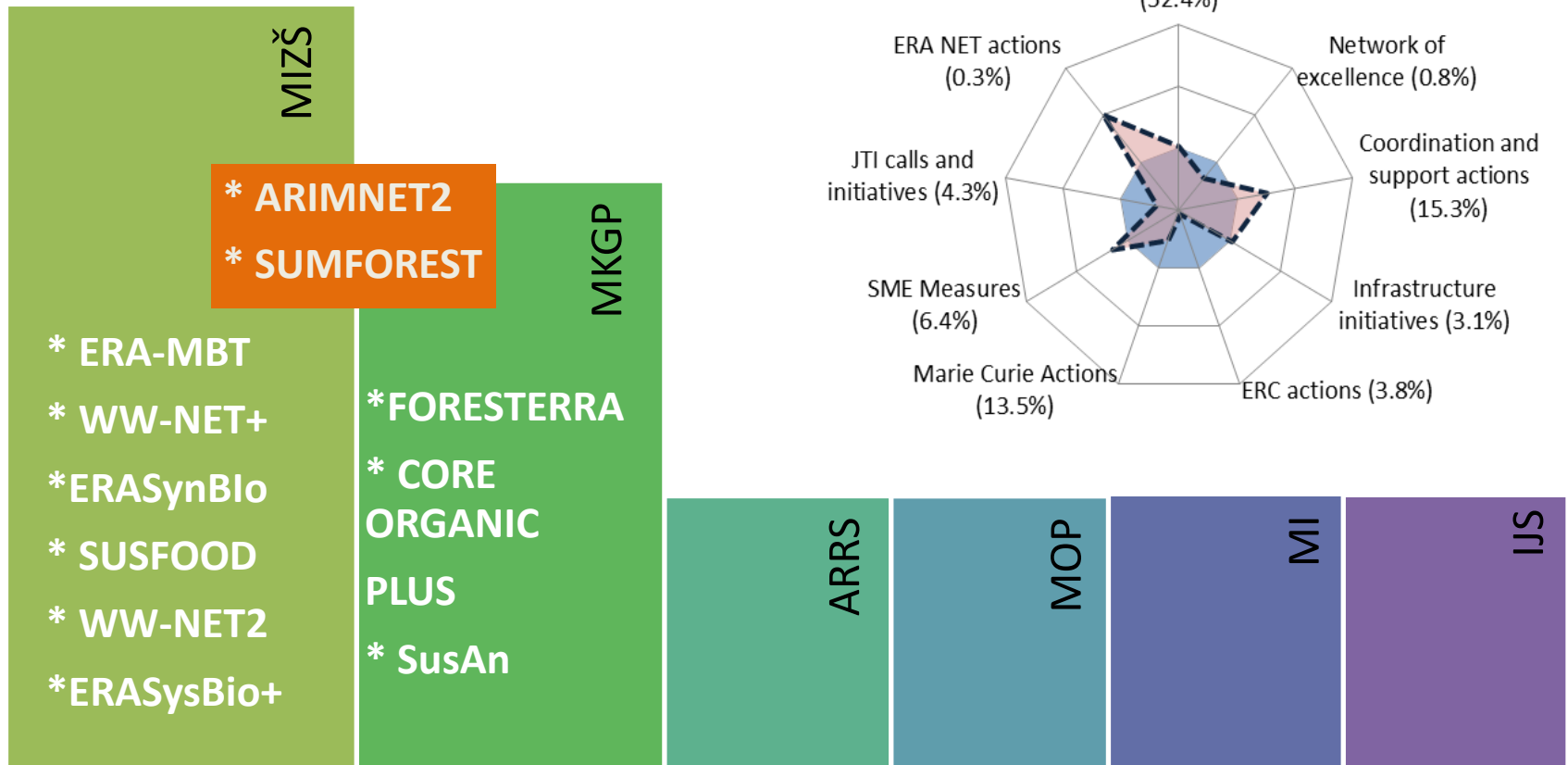
# International cooperation

- Art.185
- CIP (Poly4EmI)
- COSME
- COST
- ETPs
- EUREKA
- JPIs
- JTIs (IMI2, BBI)
- Research infrastructures (ESFRI)
- HORIZON 2020 (ERA-NET Co-fund)

## FP7

- Share of SI participation in the total participation is 0'8%
- Country received 0'4% of total EC contribution
- Relatively succesful as SI represents 0'4% inhabitants of EU

# ERA-NET Participation





# Participation

- Interest from research community
- Positive experience from previous ERA-NETs (continuation)
- Success of SI researchers in previous ERA-NET calls
- Critical mass of researchers in the thematic covered
- Following national strategy (e.g. Smart specialisation)
- Financing and transnational cooperation for research fields that are financially disadvantaged
- Opportunity to develop the research community
- Invitation to join



# Commitment

- Typical financial commitment 630.000,00 € for 3 years/ERA-NET: funding of 2-3 selected projects
- yearly for ERA-NETs: 1'5 M€

## WW- NET: A success story:

- **WOODWISDOM-NET:** 3<sup>rd</sup> call - funded 13 projects of which 6 with SI participation
- **WOODWISDOM-NET:** 4<sup>th</sup> call - funded 24 projects of which 7 with SI participation (14 partners → 6 from industry)

Young University established in 2003  
 Young ambitious team  
 Collaboration with industry  
 Established networks with partners at home and abroad



WW-NET as an important stepping stone in network creation, providing opportunities for further collaboration in COST and H2020 Teaming program + a facilitator of industry – academia collaboration



# + funding agency perspective

## Institutional benefits

- increasing synergies between MIZS and other ministries
- increasing collaboration between MIZS and SRA
- enabling links with countries where research policy and international integration are more advanced

## Increasing excellence and impact

- Implementing a bottom-up approach – stakeholder consultations
- Giving national funding a focus
- Implementing truly international peer review
- Technology transfer promotion
- SME participation promotion

## Improving national procedures

- learning from different funding organizations (we need more of that!)
- finding common solutions to common funding problems (we need more of that too!)

## Integration and visibility of SI science into the EU



## + researcher perspective

- Opportunity to **assess the quality & competitiveness of research**
- Opportunity to **participate in transnational projects**(ERA-NETs as a kindergarten for FP projects)
- Opportunity to be at the **forefront of scientific development**
- Opportunity to be **actively involved in strategic content definition**, directly impacting national and European research policy (SAB membership)
- Opportunity **to gain insight into project evaluation** by forming part of the international expert basis (SEC membership)
- Opportunity to **participate in capacity building activities**
- Opportunity for **increased mobility**



# Challenges

- National legislation is not adapted to transnational cooperation
- Human resources and funding are limited
- Lack of an internationalization strategy
- Lack of set national research priorities
- State aid rules
- Moving up the TRL scale

# Confronting challenges

## Establishing procedures

- Joining an ERA-NET
- Setting the budget for JTCs
- Simplifying national procedures in – JTCs
- Searching for synergies with ESIF

## **Everything is difficult before it's easy!**

- Omitting the national call
- Consortium agreements
- Monitoring procedures

## Tokens of advice

*ERA-NET Schemes are a very suitable mechanism for LPCs and their research communities to become involved in transnational activities!*

- Convince the decision makers: promoting the added value of ERA-NETs is a must!
- Chose the ERA-NETs you participate in wisely (less can be more!)
- Assume an active role in ERA-NET: a must for knowledge transfer and capacity building
- Share your problems and ask for help!
- Tune into the ERA PORTAL

# Thank you for your attention

## PLATFORM2 keeps you informed!

Keep connected via:

